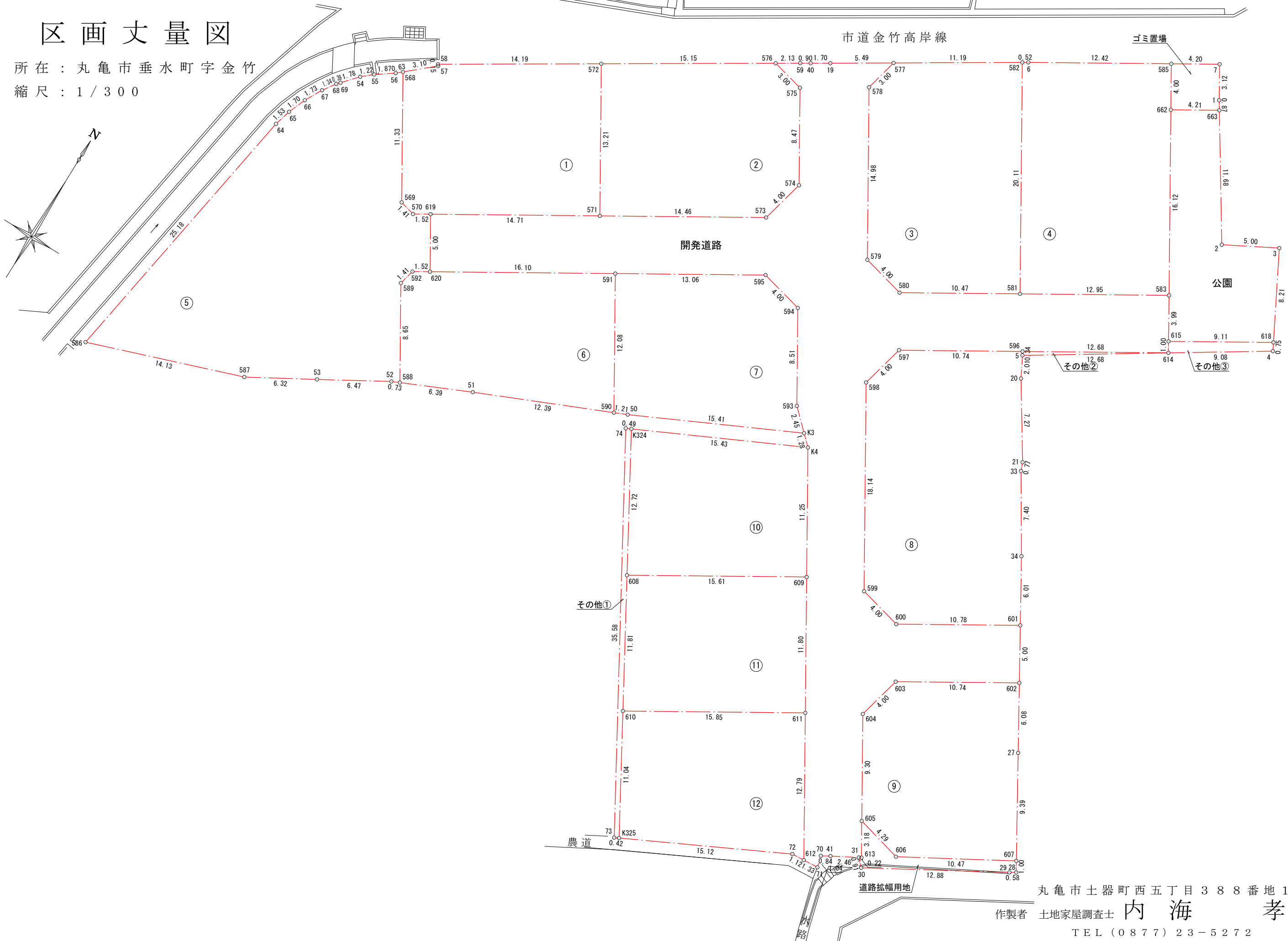
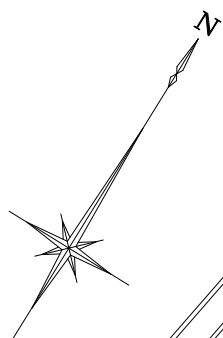


区画丈量図

所在：丸亀市垂水町字金竹
縮尺：1/300



丸亀市土器町西五丁目388番地1

作製者 土地家屋調査士 内海 孝

TEL (0877) 23-5272

求 積 表

地 番	①			
NO	Xn	Yn	Yn+1-Yn-1	Xn・(Yn+1-Yn-1)
568	136809.097	29586.779	3.532	483209.730604
569	136799.394	29592.643	7.238	990154.013772
570	136799.055	29594.017	2.680	366621.467400
619	136799.844	29595.323	13.896	1900970.632224
571	136807.452	29607.913	5.753	787053.271356
572	136818.766	29601.076	-18.893	-2584916.946038
58	136811.266	29589.020	-11.965	-1636946.797690
57	136811.142	29589.111	-2.241	-306593.769222
合 計				-448.397594
合 計 面 積				224.1987970
地 積				224.19 m ²

地 番	②			
NO	Xn	Yn	Yn+1-Yn-1	Xn・(Yn+1-Yn-1)
572	136818.766	29601.076	-6.032	-825290.796512
571	136807.452	29607.913	19.213	2628481.575276
573	136814.931	29620.289	13.334	1824290.289954
574	136818.817	29621.247	-3.425	-468604.448225
575	136826.070	29616.864	-7.302	-999103.963140
576	136826.770	29613.945	-15.788	-2160221.044760
合 計				-448.387407
合 計 面 積				224.1937035
地 積				224.19 m ²

地 番	③			
NO	Xn	Yn	Yn+1-Yn-1	Xn・(Yn+1-Yn-1)
577	136832.180	29622.647	-10.197	-1395277.739460
578	136829.260	29621.949	7.055	965330.429300
579	136816.432	29629.702	11.638	1592269.635616
580	136815.473	29633.587	12.848	1757805.197104
581	136820.890	29642.550	-1.441	-197158.902490
582	136838.106	29632.146	-19.903	-2723488.823718
合 計				-520.203648
合 計 面 積				260.1018240
地 積				260.10 m ²

地 番	④			
NO	Xn	Yn	Yn+1-Yn-1	Xn・(Yn+1-Yn-1)
582	136838.106	29632.146	9.961	1363044.373866
581	136820.890	29642.550	21.489	2940144.105210
583	136827.588	29653.635	2.746	375728.556648
662	136841.388	29645.296	-10.409	-1424382.007692
585	136844.812	29643.226	-12.707	-1738887.026084
6	136838.382	29632.589	-11.080	-1516169.272560
合 計				-521.270612
合 計 面 積				260.6353060
地 積				260.63 m ²

地 番	⑤			
NO	Xn	Yn	Yn+1-Yn-1	Xn・(Yn+1-Yn-1)
568	136809.097	29586.779	-6.345	-868053.720465
56	136808.675	29586.298	-2.011	-275122.245425
55	136807.588	29584.768	-2.459	-336409.858892
54	136806.789	29583.839	-2.108	-288388.711212
69	136805.449	29582.660	-1.440	-196999.846560
68	136805.158	29582.399	-1.022	-139814.871476
67	136804.046	29581.638	-1.584	-216697.608864
66	136802.522	29580.815	-1.458	-199458.077076
65	136800.942	29580.180	-1.048	-143367.387216
64	136799.459	29579.767	-4.529	-619564.749811
586	136774.614	29575.651	9.220	1261061.941080
587	136779.291	29588.987	18.823	2574596.594493
53	136782.435	29594.474	11.081	1515686.162235
52	136785.688	29600.068	6.269	857509.478072
588	136785.991	29600.743	-3.803	-520197.123773
589	136793.400	29596.265	-4.139	-566187.882600
592	136794.774	29596.604	1.645	225027.403230
620	136795.564	29597.910	-1.281	-175235.117484
619	136799.844	29595.323	-3.893	-532561.792692
570	136799.055	29594.017	-2.680	-366621.467400
569	136799.394	29592.643	-7.238	-990154.013772
合 計				-952.895608
合 計 面 積				476.4478040
地 積				476.44 m ²

地 番	⑥			
NO	Xn	Yn	Yn+1-Yn-1	Xn・(Yn+1-Yn-1)
588	136785.991	29600.743	10.311	1410400.353201
51	136788.612	29606.576	17.203	2353174.492236
590	136793.551	29617.946	5.119	700246.187569
591	136803.894	29611.695	-20.036	-2741002.820184
620	136795.564	29597.910	-15.091	-2064381.856324
592	136794.774	29596.604	-1.645	-225027.403230
589	136793.400	29596.265	4.139	566187.862600
合 計				-403.144132
合 計 面 積				201.5720660
地 積				201.57 m ²

地 番	⑦			
NO	Xn	Yn	Yn+1-Yn-1	Xn・(Yn+1-Yn-1)
590	136793.551	29617.946	7.364	1007347.709564
50	136794.034	29619.059	15.003	2052320.892102
K3	136800.721	29632.949	12.106	1656109.528426
593	136802.406	29631.165	-6.187	-846396.485922
594	136809.692	29626.762	-8.289	-1134015.536988
595	136810.650	29622.876	-15.067	-2061326.063550
591	136803.894	29611.695	-4.930	-674443.197420
合 計				-403.153788
合 計 面 積				201.5768940
地 積				201.57 m ²

地 番	⑧			
NO	Xn	Yn	Yn+1-Yn-1	Xn・(Yn+1-Yn-1)
5	136816.454	29645.542	-1.123	-153644.877842
596	136816.748	29645.368	-9.368	-1281699.295264
597	136811.192	29636.174	-10.152	-1388907.221184
598	136807.307	29635.216	8.427	1152875.176089
599	136791.777	29644.601	13.270	1815226.880790
600	136790.819	29648.486	13.114	1793874.800366
601	136796.396	29657.715	6.156	842118.613776
34	136801.562	29654.642	-7.002	-957884.537124
33	136807.834	29650.713	-4.209	-575824.173306
21	136808.560	29650.433	-4.222	-577605.740320
20	136814.673	29646.491	-4.891	-669160.565643
合 計				-630.939662
合 計 面 積				315.4698310
地 積				315.46 m ²

地 番	⑨			
NO	Xn	Yn	Yn+1-Yn-1	Xn・(Yn+1-Yn-1)
602	136792.097	29660.272	-12.308	-1683637.129876
603	136786.538	29651.074	-10.157	-1389340.866466
604	136782.652	29650.115	3.853	527023.558156
605	136774.689	29654.927	8.971	1227005.735019
606	136773.608	29659.086	13.255	1812934.174040
607	136778.799	29668.182	4.296	587601.720504
27	136786.870	29663.382	-7.910	-1081984.141700
合 計				-396.950323
合 計 面 積				198.4751615
地 積				198.47 m ²

地 番	⑩			
NO	Xn	Yn	Yn+1-Yn-1	Xn・(Yn+1-Yn-1)
K4	136799.837	29633.886	-19.724	-2698239.984988
K324	136793.146	29619.981	-7.547	-1032377.872862
608	136782.129	29626.339	19.724	2697890.712396
609	136790.207	29639.705	7.547	1032355.692229
合 計				-371.453225
合 計 面 積				185.7266125
地 積				185.72 m ²

地 番	⑪			
NO	Xn	Yn	Yn+1-Yn-1	Xn・(Yn+1-Yn-1)
608	136782.129	29626.339	-7.462	-1020668.246598
610	136771.900	29632.243	19.474	2663495.980600
611	136780.101	29645.813	7.462	1020653.113662
609	136790.207	29639.705	-19.474	-2663852.491118
合 計				-371.643454
合 計 面 積				185.8217270
地 積				185.82 m ²

地 番	⑫			
NO	Xn	Yn	Yn+1-Yn-1	Xn・(Yn+1-Yn-1)
610	136771.900	29632.243	-8.050	-1101013.795000
K325	136762.337	29637.763	19.067	2607647.479579
72	136769.071	29651.310	14.669	2006265.502499
612	136769.147	29652.432	-5.497	-751820.001059
611	136780.101	29645.813	-20.189	-2761453.459089
合 計				-374.273070
合 計 面 積				187.1365350
地 積				187.13 m ²

地 番	開発道路			
NO	Xn	Yn	Yn+1-Yn-1	Xn・(Yn+1-Yn-1)
576	136826.770	29613.945	1.105	151193.580850
575	136826.070	29616.864	7.302	999103.963140
574	136818.817	29621.247	3.425	468604.448225
573	136814.931	29620.289	-13.334	-1824290.289954
571	136807.452	29607.913	-24.966	-3415534.846632
619	136799.844	29595.323	-10.003	-1368408.839532
620	136795.564	29597.910	16.372	2239616.973808
591	136803.894	29611.695	24.966	3415446.017604
595	136810.650	29622.876	15.067	2061326.063550
594	136809.692	29626.762	8.289	1134015.536988
593	136802.406	29631.165	6.187	846396.485922
K3	136800.721	29632.949	2.721	372234.761841
K4	136799.837	29633.886	6.756	924219.698772
609	136790.207	29639.705	11.927	1631496.798889
611	136780.101	29645.813	12.727	1740800.345427
612	136769.147	29652.432	7.951	1087451.487797
71	136769.239	29653.764	1.061	145112.162579
70	136770.245	29653.493	0.456	62367.231720
41	136770.666	29654.220	2.884	394446.600744
31	136771.851	29656.377	2.357	322371.252807
613	136771.960	29656.577	-1.450	-198319.342000
605	136774.689	29654.927	-6.462	-883838.040318
604	136782.652	29650.115	-3.853	-527023.558156
603	136786.538	29651.074	10.157	1389340.866466
602	136792.097	29660.272	6.641	908436.316177
601	136796.396	29657.715	-11.786	-1612282.323256
600	136790.819	29648.486	-13.114	-1793874.800366
599	136791.777	29644.601	-13.270	-1815226.880790
598	136807.307	29635.216	-8.427	-1152875.176089
597	136811.192	29636.174	10.152	1388907.221184
596	136816.748	29645.368	20.048	2742902.163904
614	136823.307	29656.222	10.335	1414068.877845
615	136824.165	29655.703	-2.587	-353964.114855
583	136827.588	29653.635	-13.153	-1799693.264964
581	136820.890	29642.550	-20.048	-2742985.202720
580	136815.473	29633.587	-12.848	-1757805.197104
579	136816.432	29629.702	-11.638	-1592269.635616
578	136829.260	29621.949	-7.055	-965330.429300
577	136832.180	29622.647	-3.966	-542676.425880
19	136829.271	29617.983	-6.	